

Swisspearl design solutions

Products and system

**swiss
pearl®**



Competence, excellence and innovation

Long term experience

For more than 50 years, Swisspearl's Research & Development teams have continuously expanded their unique expertise regarding fiber cement material technology, coloration and application of the whole systems. These significant technology advances are the backbone of Swiss quality. Swisspearl is the only manufacturer who masters the highly demanding production process for integrally colored shade in shade fiber cement panels offered in such a wide color variety.

Unique with long time proven quality

Swisspearl fiber cement panels are manufactured with low energy and high environment consciousness. Thus, the products are 100% environmentally friendly. Additionally, they are mainly made of local mineral raw materials. The proprietary processes pioneered by Swisspearl with special surface finish, sealed edges and back coating ensure optimal behavior and durability of the panels. This has been a proven process since the late 1950's. Furthermore, Swiss construction authorities testify to over 40 years as standard life expectancy. Millions of panels installed throughout the world prove the outstanding, reliable long term quality of the fiber cement panels and coatings.

Content		
Swisspearl product range	Panel sizes	6
	Color overview	8
	Facade and interior colors	10
	Roof colors	38
Design possibilities	Customized panels	42
	Perforations	44
	Engravings	46
	Panels coated on both sides	48
	Sun shading elements	49
	Customized colors	50
Ventilated facade system	Fasteners	54
	The system	56
	Advantages	58
	Technical	60
	General information	62
General information	Warranty and properties of material	64
There for you		65

Swisspearl product range

Panel sizes and colors



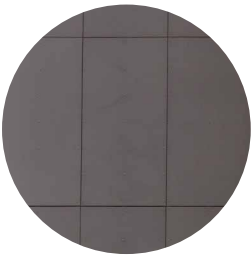
6 Swisspearl panel sizes

Facades and interior

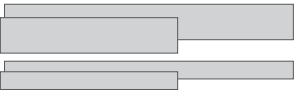
Swisspearl Largo - large size panels



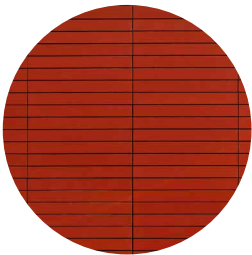
Max. useable, finished panel size
3050 × 1250 × 8 mm | 12 mm
2510 × 1250 × 8 mm | 12 mm



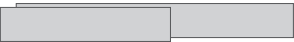
Swisspearl Linearis - slat panels



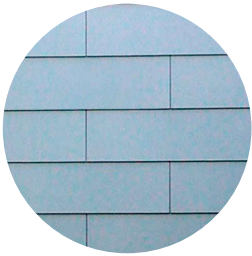
2500 × 300 × 8 mm
2500 × 147 × 8 mm
1500 × 300 × 8 mm
1500 × 147 × 8 mm



Swisspearl Modula - overlap panels



2500 × 300 × 8 mm
1500 × 300 × 8 mm



Roof

Swisspearl Roof - the 5th facade



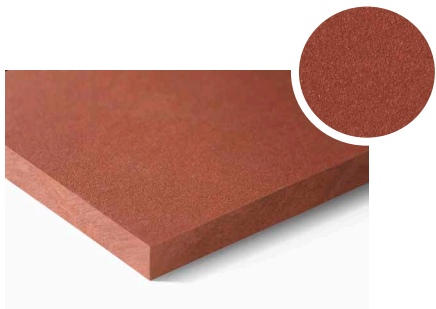
Max. useable, finished panel size
3050 × 1250 × 8 mm
2510 × 1250 × 8 mm



8 Swisspearl color overview

Independence and diversity

The Swisspearl facade panels get their independence through countless finishes and colors that offer seemingly limitless diversity. Below is an overview of the surface and color options. They are described in greater detail on the pages that follow.



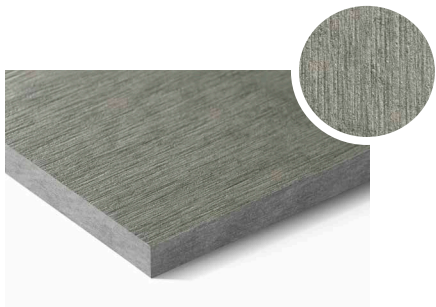
CARAT

Unique natural look and timeless beauty. The translucent lightly pigmented finish adds a distinguished expression.



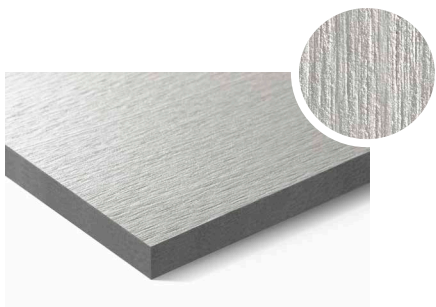
GRAVIAL

Unique interplay of light and shadow. The linear geometrical grooved surface offers countless options for making a special statement.



VINTAGO

Natural authentic, rough, lively and unique. The sanded surface highlights the purity of the fiber cement panel.



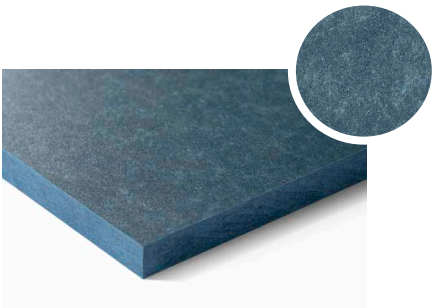
VINTAGO - REFLEX

Rough, lively with a shiny look. The sanded surface combined with a reflective surface gives a slightly rough, yet lively, shiny look.



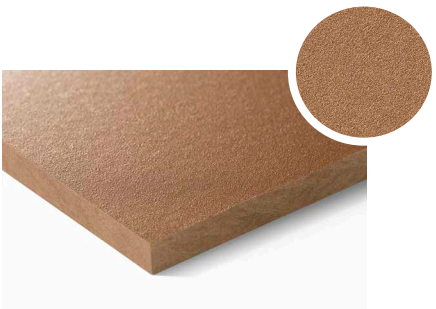
INCORA

Stylishly authentic with a vivid spreading pattern. The fiber cement panel has a quality granulated marble that creates a unique and dynamic look.



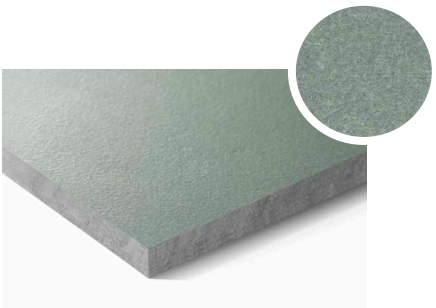
AVERA

Authentic and vibrant appearance. The transparent coating lets the original natural look of the fiber cement shine through.



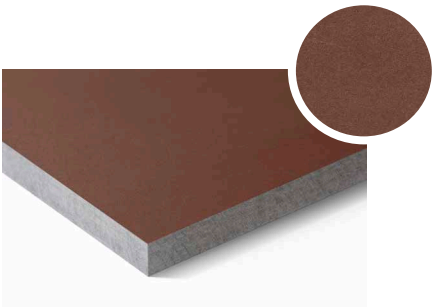
REFLEX

Shiny look with metallic character. The reflective surface coating gives the panels a sophisticated, shiny look.



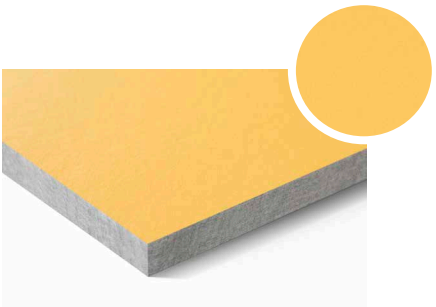
NOBILIS

Authentic fiber cement look. The translucent light pigmented surface highlights the fiber cement texture in its natural beauty and elegance.



TERRA

Earthy and warm atmosphere. The finely coordinated colors are a reminiscent of earth tones and gives the building envelope an earthy, natural look.



PLANEA

Fresh and colorful creativity. The matte and smooth finish emphasizes the clear, bright and strong colors for an overall intense appearance.

10 Swisspearl Carat

Unique natural look and timeless beauty

Carat is a through-colored fiber cement panel with a translucent, lightly pigmented finish. With its unique, natural look and timeless beauty, the monolithic material ensures a distinguished expression.

It provides a wide standard range of 25 colors and additional custom colors. Carat is available with a special HR-coating which offers increased scratch resistance and protection against heavy soiling and graffiti.

With its unique naturalness, Carat gives the building architecture a fascinating power of expression.



Tartu University Hospital, Tartu, Estonia. Architect: AW2 Architects, Helsinki, Finland. Photographer: Meraner & Hauser OHG / SNC, Bozen, Italy.



INFO

Panel

Base panel: Integrally colored
Top layer: Translucent lightly pigmented

Panel size (refer to page 6)

Swisspearl Largo:
Arbitrary panel size up to a maximum size of 3050 x 1250 mm, thickness 8 mm and 12 mm.
Largo panels can also be used for the interior.

Swisspearl Linearis:
4 different panel sizes, thickness 8 mm.

Swisspearl Modula:
2 different panel sizes, thickness 8 mm.

For a detailed summary of the sizing and color options, please refer to our delivery program.

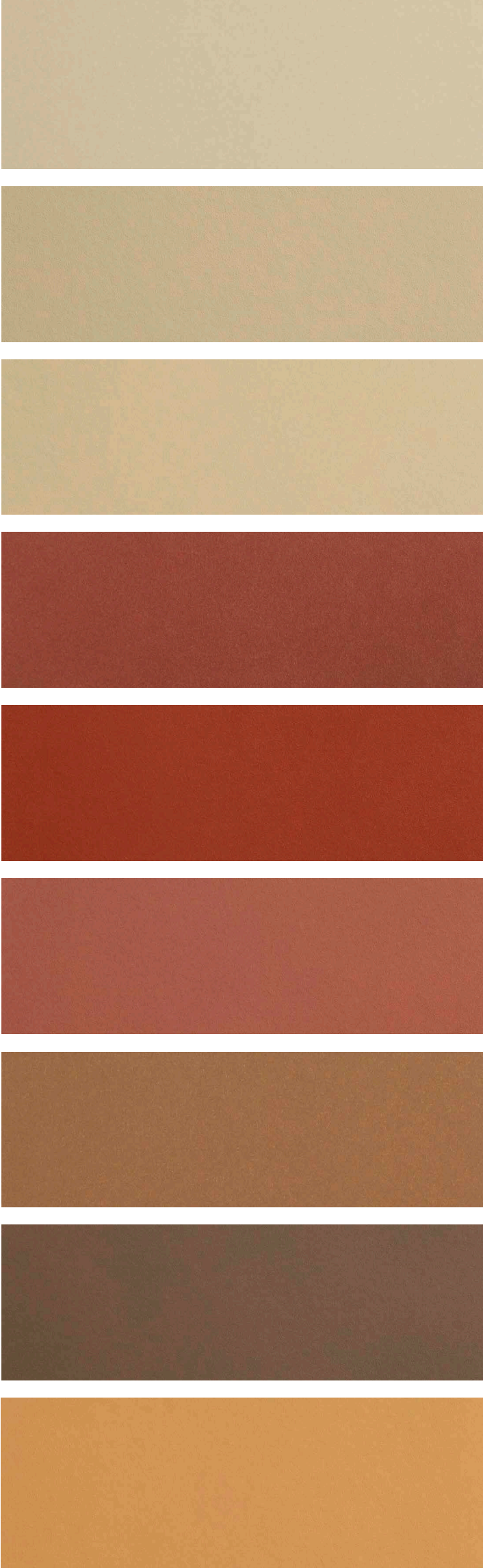
Colors

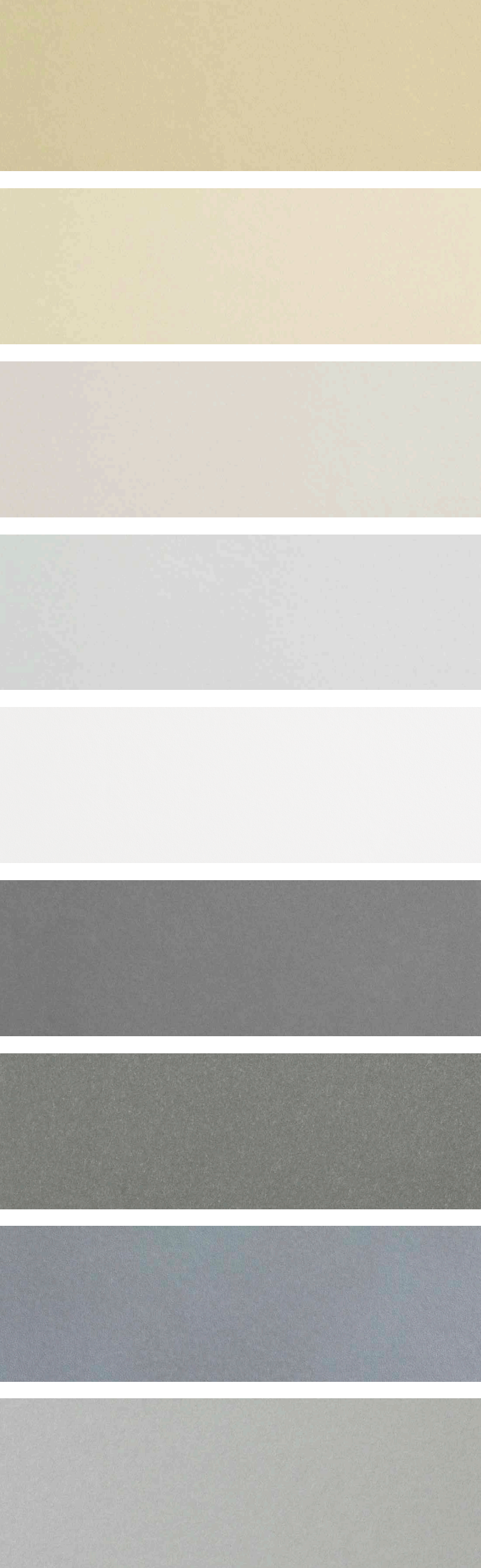
A wide standard range of 25 colors and additional custom colors.

Special HR - coating

Carat HR has a special coating that offers increased scratch resistance to the standard Carat and protection against heavy soiling and graffiti. Carat HR is available in all standard Carat colors.

Sahara 7000
Sahara 7001
Sahara 7002
Coral 7030
Coral 7031
Coral 7032
Topaz 7070
Topaz 7071
Topaz 7073





Amber 7080
Amber 7082
Onyx 7090
Onyx 7091
Onyx 7099
Agate 7219
Sapphire 7060
Sapphire 7061
Crystal 7010

Special F - coating

Carat F has a special coating that provides increased protection against weathering. Carat F is available in all standard Carat colors.

Installation

The whole range from flat layer to lapped coverings, with face or concealed fastening.

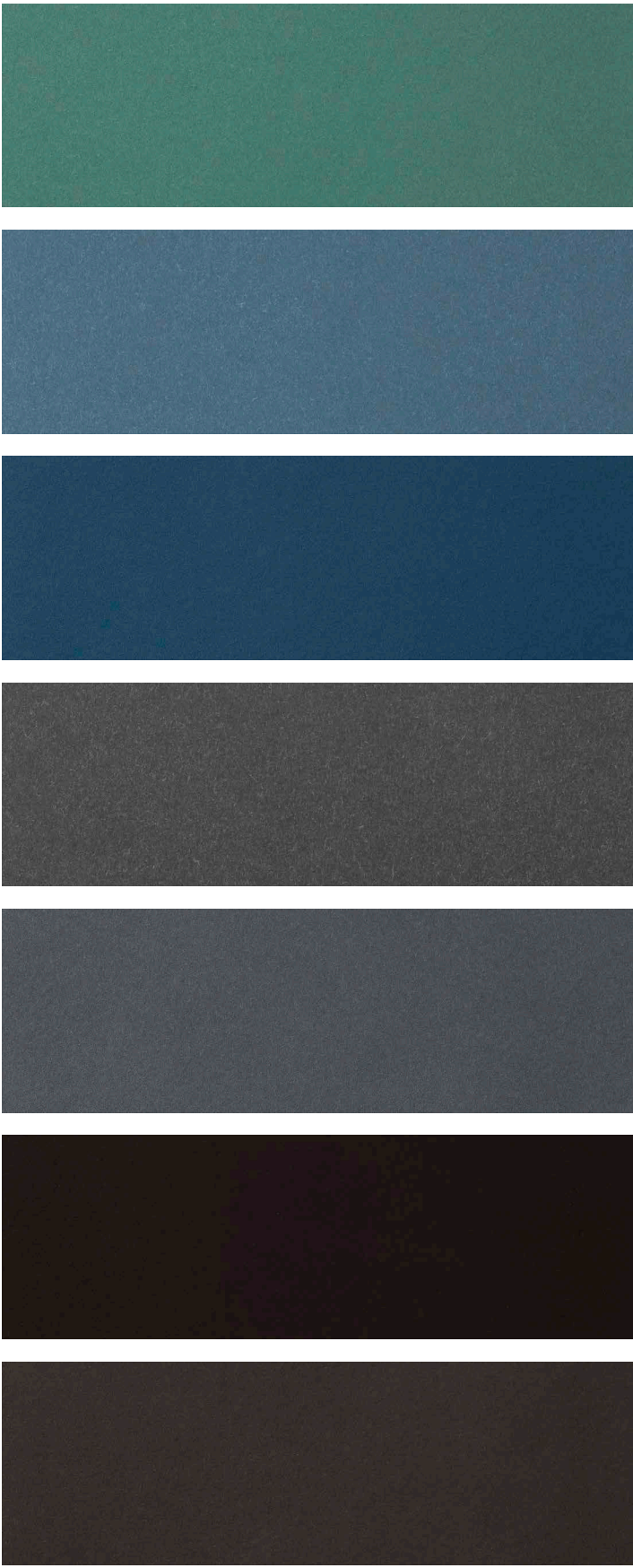
For detailed information refer to our DIM (Design & Installation Manual).



Bottom: Inland Northwest Behavioral Health Hospital, Spokane, USA.
Architect: NAC Architecture, Spokane, USA. Photographer: Rick Keating, Gates, USA.

Above: House on Haliburton Lake, Ontario, Canada.
Architect: +VG, Toronto, Canada.
Photographer: David Whittaker Photographer Inc., Toronto, Canada.

Jade 7050
Azurite 7040
Azurite 7041
Black Opal 7020
Black Opal 7021
Black Opal 7024
Black Opal 7025



Swisspearl Gravial

Unique interplay of light and shadow

Gravial is a fiber cement panel with a linear grooved surface structure with consistent character. Depending on the angle of view and the incidence of daylight, it brings a contrasting and unique light and shadow effect.

Because Gravial can be excellently combined with our Carat and Nobilis panels, by providing a wide range of colors and cutting options, it creates endless design possibilities.

Gravial is perfect for making a special architectural statement on both the interior and exterior of a building.



Photographer: Kilian J. Kessler, Zurich, Switzerland.



INFO

Panel
Base panel: Integrally colored | Grey based
Top layer: Translucent

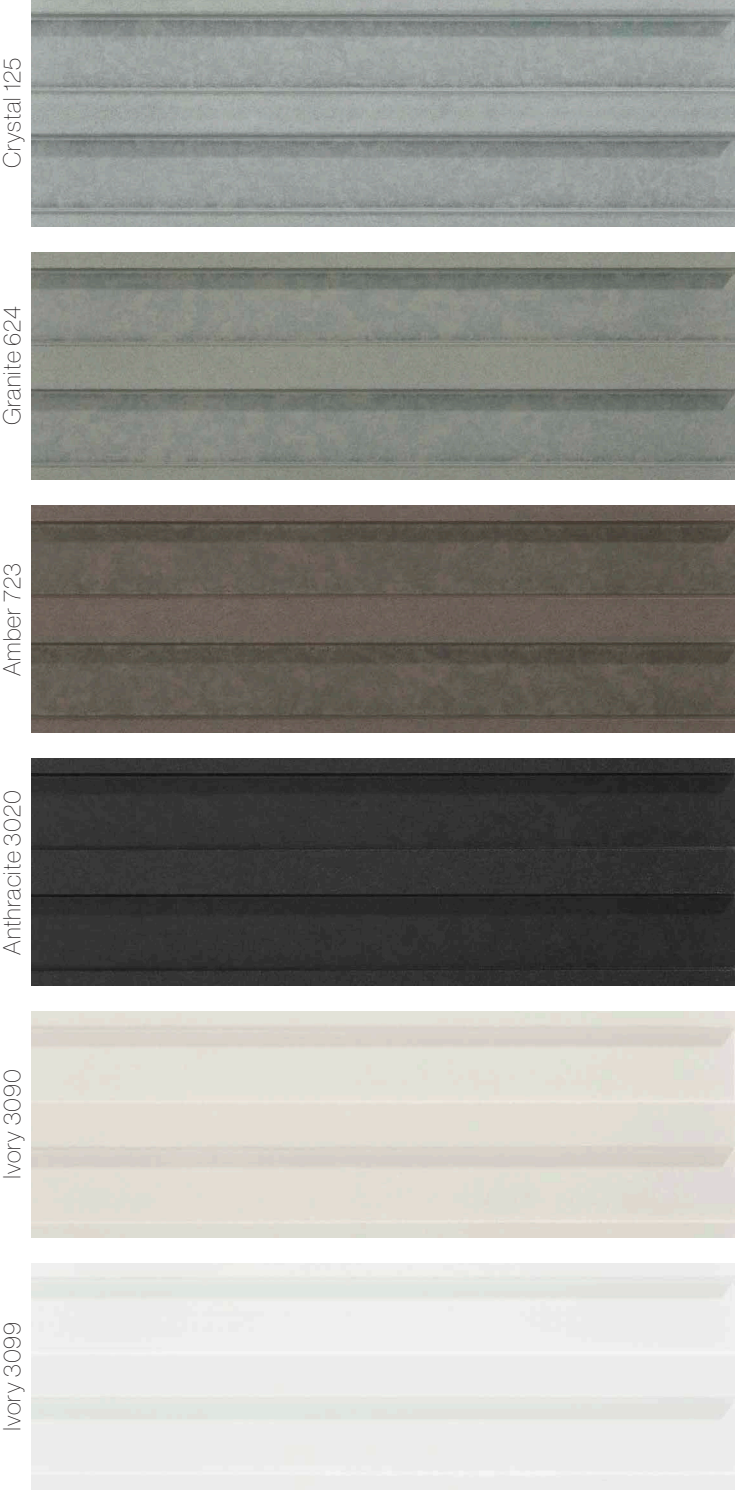
Panel size (refer to page 6)
Swisspearl Largo:
Arbitrary panel size up to a maximum size of 3050 x 1250 mm, thickness 12 mm.
Largo panels can also be used for the interior.

For a detailed summary of the sizing and color options, please refer to our delivery program.

Colors
A standard range of 6 colors.

Installation
The whole range with face or concealed fastening.

For detailed information refer to our DIM (Design & Installation Manual Gravial).



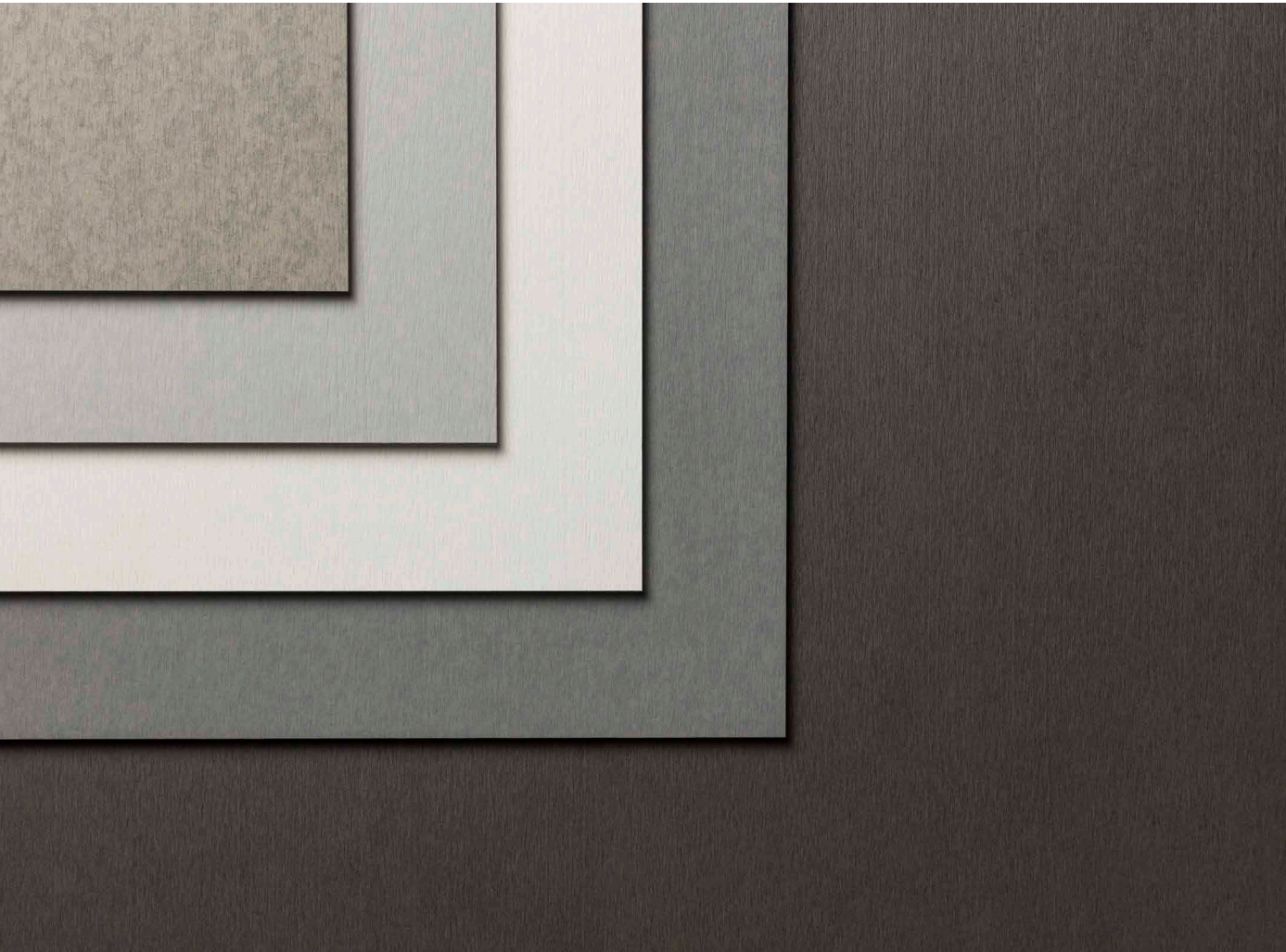
16 Swisspearl Vintago

Naturally authentic, rough, lively and unique

Vintago is a through-colored fiber cement panel with a sanded, slightly rough surface which gives the facade a natural, authentic, lively and unique look. The sanded process creates a surface that highlights the original purity of the fiber cement panels.

It offers a wide range of design possibilities through a variety of cutting and color options. Its translucent high resistant surface coating protects the panels and gives a building a consistent look that lasts.

With Vintago you give both the interior and exterior of a building a multifaceted and aesthetically beautiful look.



Photographer: Kilian J. Kessler, Zurich, Switzerland.



INFO

Panel
Base panel: Integrally colored
Top layer: Translucent

Panel size (refer to page 6)
Swisspearl Largo:
Arbitrary panel size up to a maximum size of 3050 x 1250 mm, thickness 8 mm.
Largo panels can also be used for the interior.

Swisspearl Linearis:
4 different panel sizes, thickness 8 mm.

Swisspearl Modula:
2 different panel sizes, thickness 8 mm.

For a detailed summary of the sizing and color options, please refer to our delivery program.

Colors
A wide standard range of 10 colors.
Differences in color tone between the panels are a natural part of the production characteristics. This underlines the liveliness of the material.

Installation
The whole range from flat layer to lapped coverings, with face or concealed fastening.

For detailed information refer to our DIM (Design & Installation Manual).

VI 001
VI 011
VI 021
VI 031
VI 041
VI 051
VI 061
VI 071
VI 091
VI 100



18 Swisspearl Vintago - Reflex

Rough, lively with a shiny look

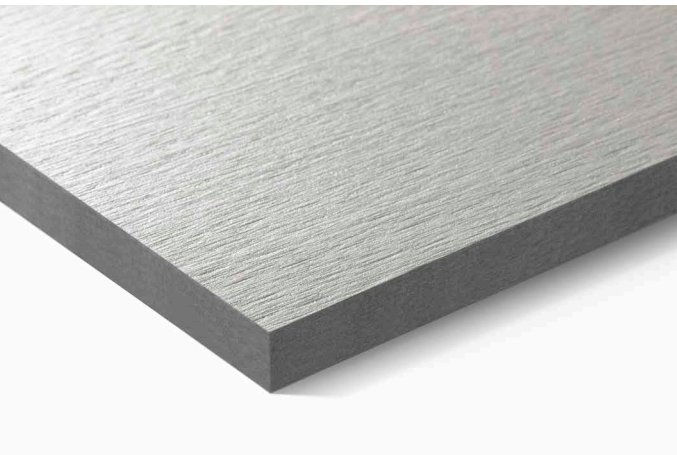
Vintago-Reflex is a through-colored fiber cement panel with a sanded, slightly rough surface combined with a reflective coating. This special composition gives the panels an outstandingly beautiful look.

It can be excellently combined with our Vintago and Reflex panels and thus opens up entirely new design possibilities.

With its unusual but wonderful composition, Vintago-Reflex makes every facade unique and surprising.



Photographer: Meraner & Hauser OHG / SNC, Bozen, Italy.



INFO

Panel
Base panel: Integrally colored
Top layer: Iridescent

Panel size (refer to page 6)
Swisspearl Largo:
Arbitrary panel size up to a maximum size of 3050 x 1250 mm, thickness 8 mm.
Largo panels can also be used for the interior.

Swisspearl Linearis:
4 different panel sizes, thickness 8 mm.

Swisspearl Modula:
2 different panel sizes, thickness 8 mm.

For a detailed summary of the sizing and color options, please refer to our delivery program.

Colors
A standard range of 3 colors.

Installation
The whole range from flat layer to lapped coverings, with face or concealed fastening.

For detailed information refer to our DIM (Design & Installation Manual).



Swisspearl Incora

Stylishly authentic with a vivid spreading pattern

Incora is a through-colored fiber cement panel with a quality granulated marble that creates a unique and dynamic look. These panels stand out for their vivid spreading pattern and uniquely balanced interplay of colors.

Every Incora panel is one-of-a-kind. The granulate becomes perfectly embedded into the fiber matrix as the panels are pressed. To ensure longevity, the panels are finished with a transparent high-scratch resistant coating.

Incora enables an out-of-the-ordinary design, but also optimal functionality for interior and exterior cladding.



SRC Campus, Armagh, Northern Ireland. Architect: Kennedy Fitzgerald Architects, Belfast, Northern Ireland. Photographer: Meraner & Hauser OHG / SNC, Bozen, Italy.



INFO

Panel

Base panel: Integrally colored
Top layer: Translucent

Panel size (refer to page 6)

Swisspearl Largo:

Arbitrary panel size up to a maximum size of 3050 x 1250 mm, thickness 8 mm.
Largo panels can also be used for the interior.

Swisspearl Linearis:

4 different panel sizes, thickness 8 mm.

Swisspearl Modula:

2 different panel sizes, thickness 8 mm.

For a detailed summary of the sizing and color options, please refer to our delivery program.

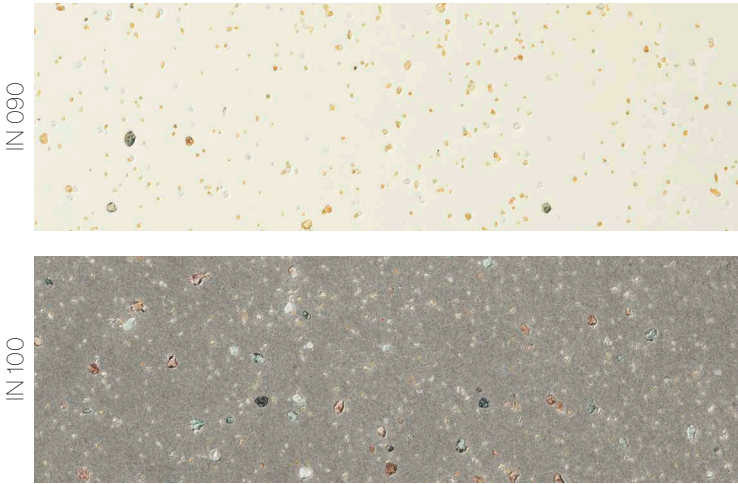
Colors

A standard range of 2 colors.
Differences in color tone between the panels are a natural part of the production characteristics. This underlines the liveliness of the material.

Installation

The whole range from flat layer to lapped coverings, with face or concealed fastening.

For detailed information refer to our DIM (Design & Installation Manual).



Swisspearl Avera

Authentic and vibrant appearance

Avera is a through-colored fiber cement panel that attains an unparalleled natural and authentic texture as a result of the dynamic production process.

A standard HR (high-resistance) coating gives the panels excellent scratch resistance and protection against heavy soiling and graffiti. The transparent coating allows the natural look of the fiber cement to shine through, thus creating a vibrant surface appearance with a varied texture and dynamic color tones.

Avera enables you to create a building envelope with an amazing liveliness and authenticity.



House on Haliburton Lake, Ontario, Canada. Architect: +VG, Toronto, Canada. Photographer: David Whittaker Photographer Inc., Toronto, Canada.



INFO

Panel

Base panel: Integrally colored
Top layer: Translucent

Panel size (refer to page 6)

Swisspearl Largo:

Arbitrary panel size up to a maximum size of 3050 x 1250 mm, thickness 8 mm.
Largo panels can also be used for the interior.

Swisspearl Linearis:

4 different panel sizes, thickness 8 mm.

Swisspearl Modula:

2 different panel sizes, thickness 8 mm.

For a detailed summary of the sizing and color options, please refer to our delivery program.

Colors

A wide standard range of 9 colors.
Differences in color tone between the panels are a natural part of the production characteristics. This underlines the liveliness of the material.

Installation

The whole range from flat layer to lapped coverings, with face or concealed fastening.

Detailed information refer to our DIM (Design & Installation Manual).

AV 000

AV 010

AV 020

AV 030

AV 040

AV 050

AV 060

AV 070

AV 100

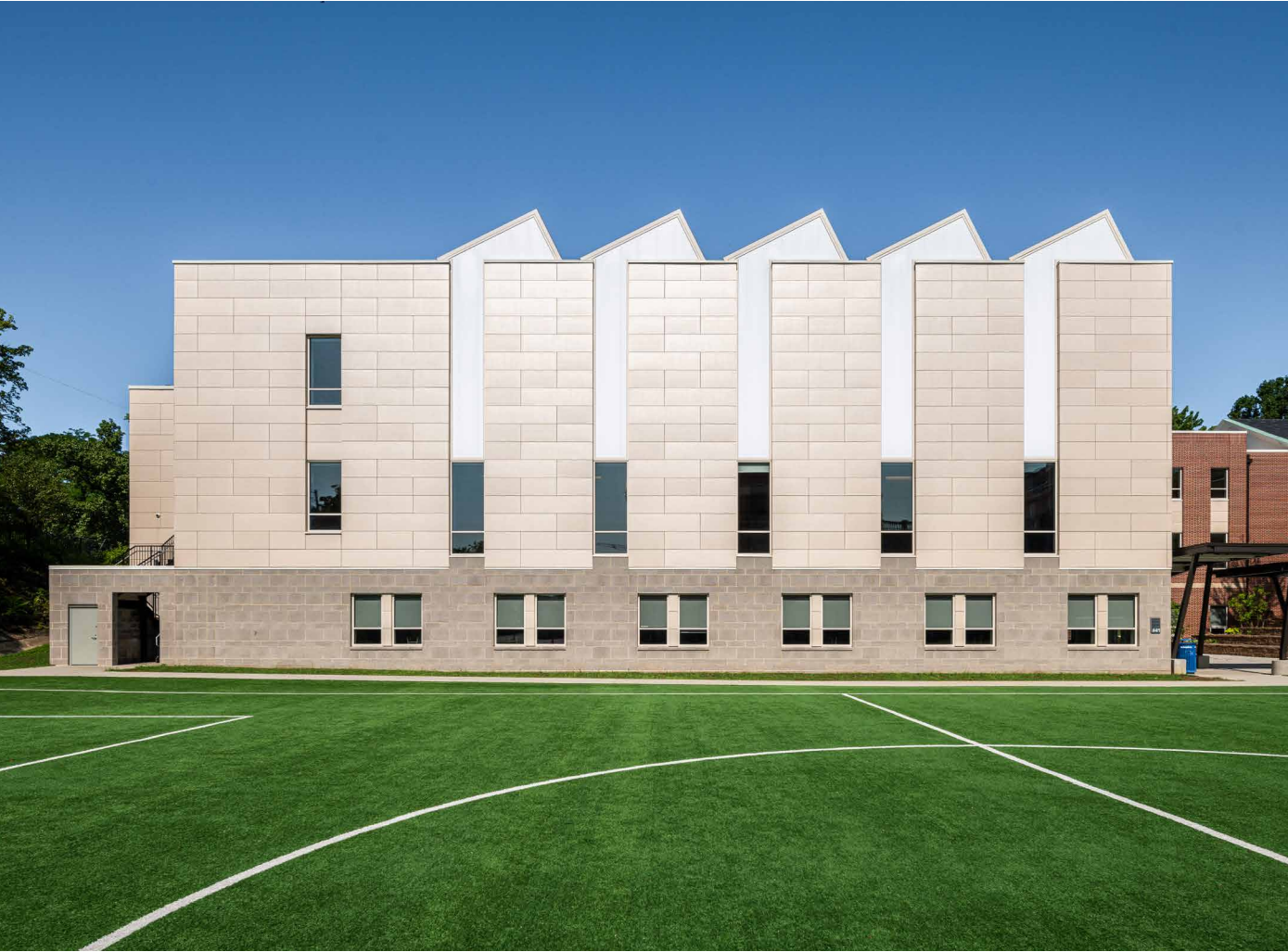
24 **Swisspearl Reflex**

Shiny look with metallic character

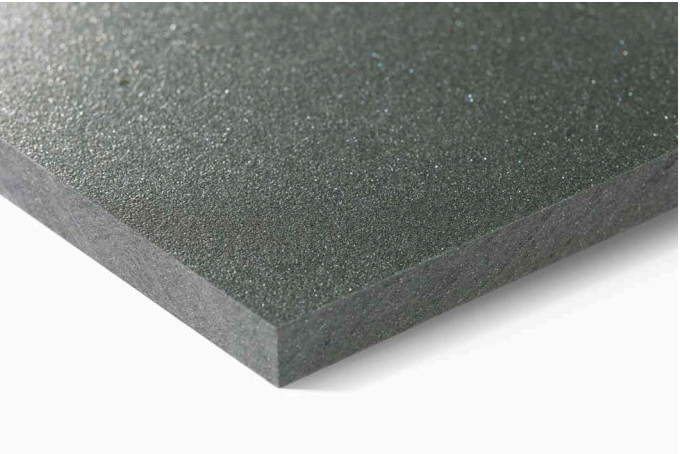
Reflex is a through-colored fiber cement panel with a reflective surface coating. The metallic character gives the panels a sophisticated, shiny look and creates exciting nuances in color shades depending on the vantage point and lighting.

The standard range, with 11 colors, opens up unlimited opportunities in architecture.

With its shiny appearance, Reflex transforms building envelopes into sophisticated architectural highlights.



DC International School, Washington, USA. Architect: Perkins Eastman DC, Washington, USA. Photographer: Brycen Fischer, Baltimore, USA.



INFO

Panel

Base panel: Integrally colored
Top layer: Iridescent

Panel size (refer to page 6)

Swisspearl Largo:
Arbitrary panel size up to a maximum size of 3050 x 1250 mm, thickness 8 mm and 12 mm.
Largo panels can also be used for the interior.

Swisspearl Linearis:
4 different panel sizes, thickness 8 mm.

Swisspearl Modula:
2 different panel sizes, thickness 8 mm.

For a detailed summary of the sizing and color options, please refer to our delivery program.

Colors

A wide standard range of 11 colors.

Installation

The whole range from flat layer to lapped coverings, with face or concealed fastening.

Detailed information refer to our DIM (Design & Installation Manual).

Silver 9000

Platinum 9020

Black Velvet 9221

Dark Silver 9222

Crimson 9231

Cobalt Blue 9241

Autumn Leaves 9270

Mystic Brown 9271

Gold 9272

Special base panel (refer to page 18)

Three Reflex colors are also available with a sanded surface panel.



28 Swisspearl Nobilis

Authentic fiber cement look

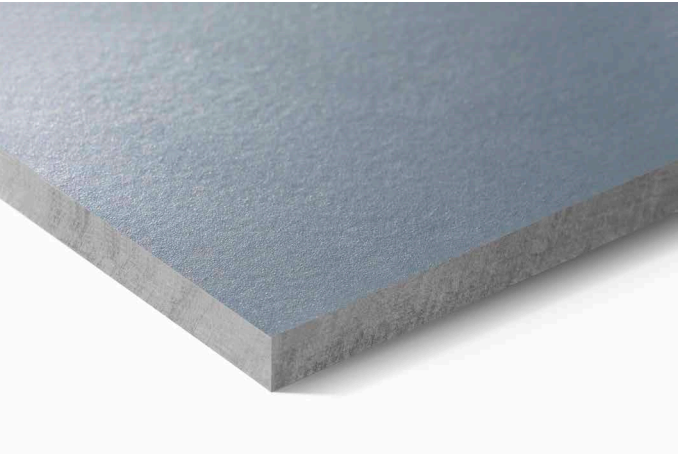
Nobilis is a grey based panel with a translucent, lightly pigmented surface, which highlights the fiber cement texture in its natural beauty and elegance.

The 12 colors are characterized by smooth tones of grey, finely coordinated with each other. All colors are available with an optional, high-resistant (HR) coating, which provides an increased scratch resistance and offers protection against heavy soiling and graffiti.

On larger surfaces, Nobilis will create sophisticated statements with its elegant and soft colors.



Seamus Heaney Home Place, Bellaghy, Northern Ireland. Architect: W M Given, Coleraine, Great Britain. Photographer: Meraner & Hauser OHG / SNC, Bozen, Italy.



INFO

Panel

Base panel: Grey based

Top layer: Translucent lightly pigmented

Panel size (refer to page 6)

Swisspearl Largo:

Arbitrary panel size up to a maximum size of 3050 x 1250 mm, thickness 8 mm. These 12 mm panels are only available in size 2510 x 1250 mm. Largo panels can also be used for the interior.

Swisspearl Linearis:

4 different panel sizes, thickness 8 mm.

Swisspearl Modula:

2 different panel sizes, thickness 8 mm.

For a detailed summary of the sizing and color options, please refer to our delivery program.

Colors

A wide standard range of 12 colors and additional custom colors.

Special HR - coating

Nobilis HR has a special coating that provides excellent scratch resistance to the standard Nobilis and protection against heavy soiling and graffiti. Nobilis HR is available in all standard Nobilis colors.

Crystal 122

Crystal 123

Crystal 124

Crystal 125

Azurite 421

Azurite 422

Jade 521

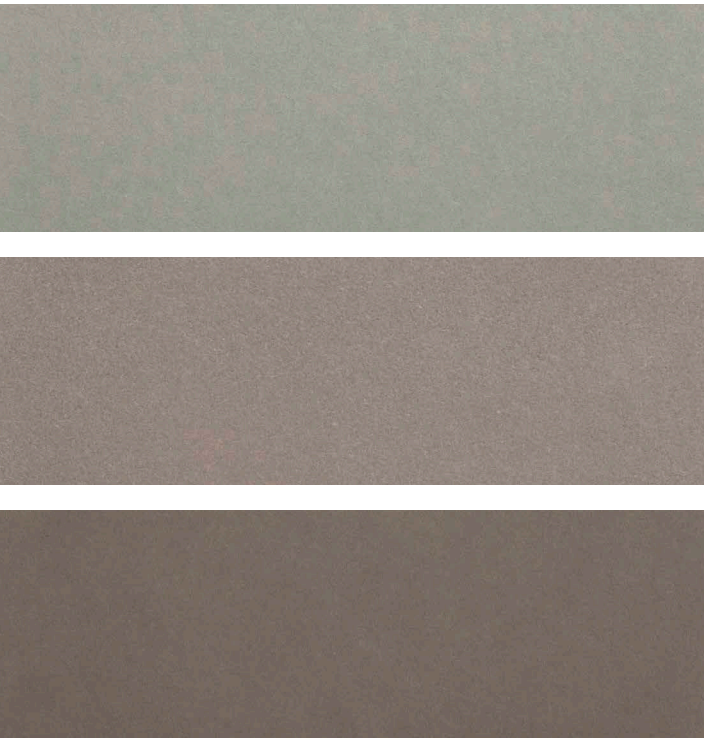
Jade 522

Granite 622

Installation

The whole range from flat layer to lapped coverings, with face or concealed fastening.

For detailed information refer to our DIM (Design & Installation Manual).

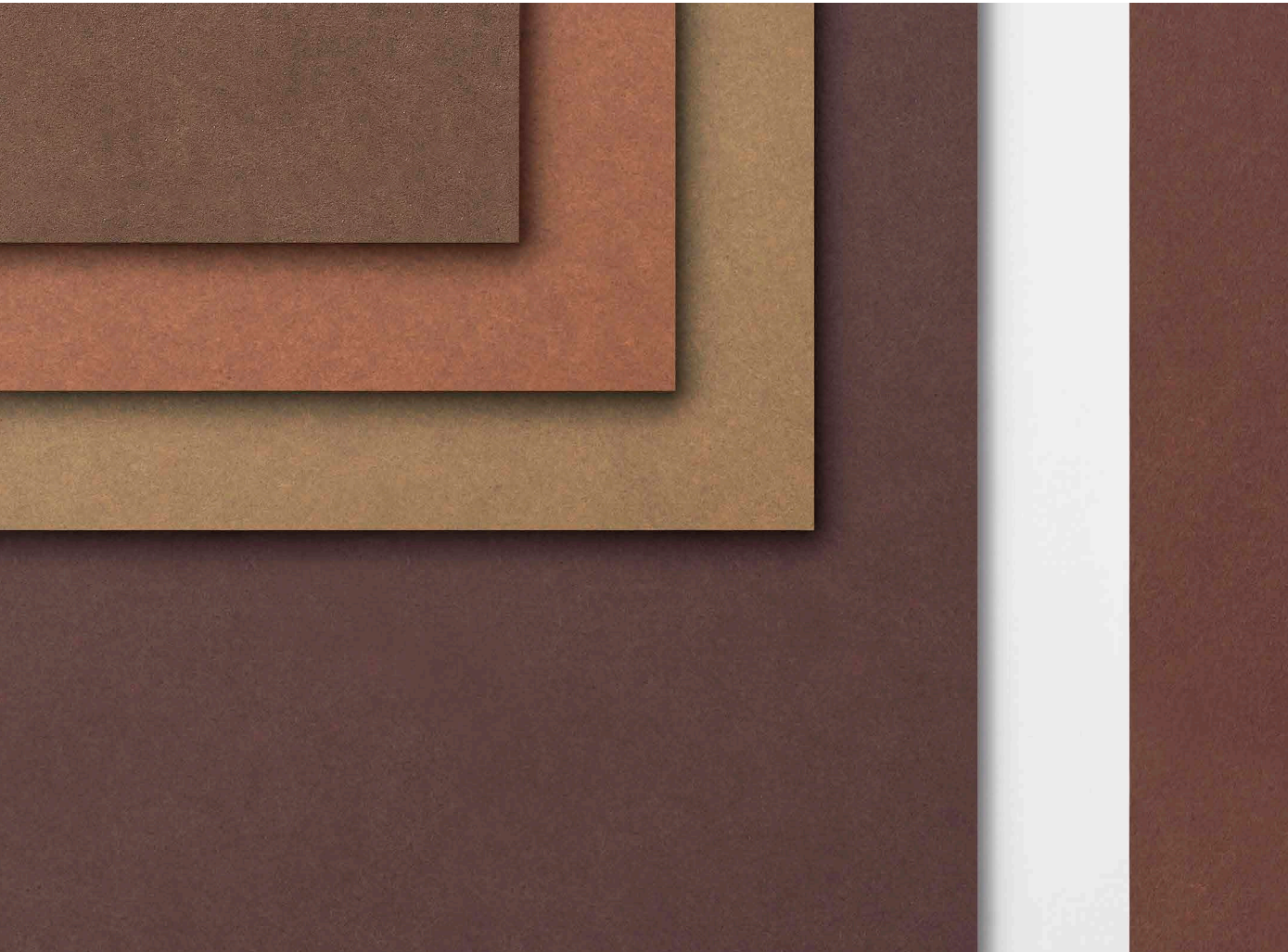


Swisspearl Terra

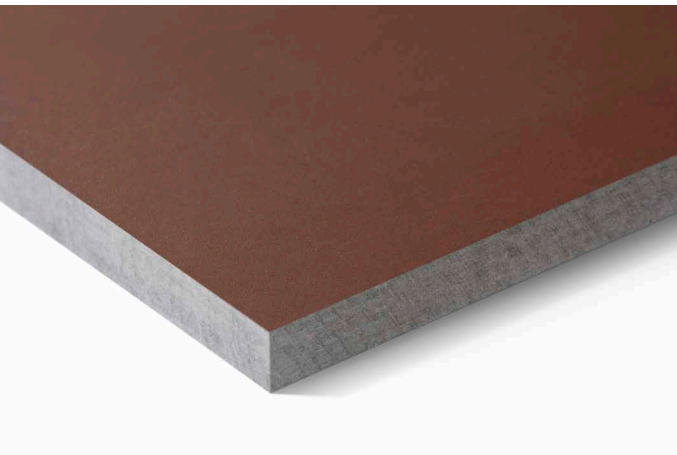
Earthy and warm atmosphere

Terra is a grey based fiber cement panel with a translucent, strongly pigmented coating. The finely coordinated colors are a reminiscent of earth tones and gives the building envelope an earthy, warm look.

With Terra, buildings are able to merge with their natural environment.



Photographer: Meraner & Hauser OHG / SNC, Bozen, Italy.



INFO

Panel

Base panel: Grey based
Top layer: Translucent strongly pigmented

Panel size (refer to page 6)

Swisspearl Largo:
Arbitrary panel size up to a maximum size of 3050 x 1250 mm, thickness 8 mm. These 12 mm panels are only available in size 2510 x 1250 mm.
Largo panels can also be used for the interior.

Swisspearl Linearis:
4 different panel sizes, thickness 8 mm.

Swisspearl Modula:
2 different panel sizes, thickness 8 mm.

For a detailed summary of the sizing and color options, please refer to our delivery program.

Colors

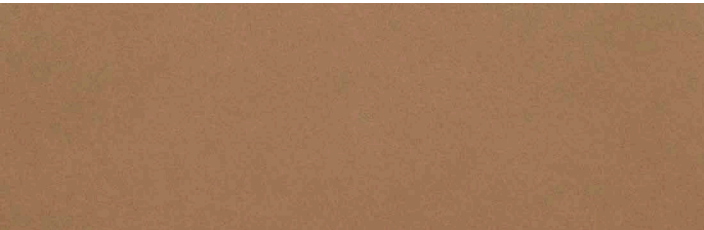
A standard range of 6 colors.

Installation

The whole range from flat layer to lapped coverings, with face or concealed fastening.

For detailed information refer to our DIM (Design & Installation Manual).

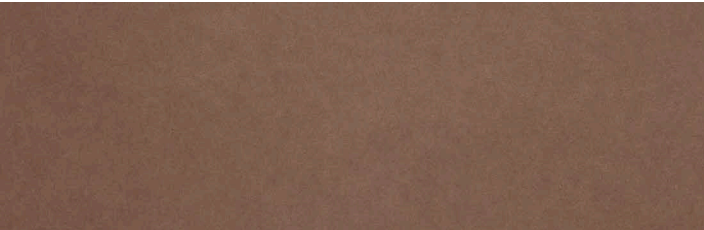
Amber 751



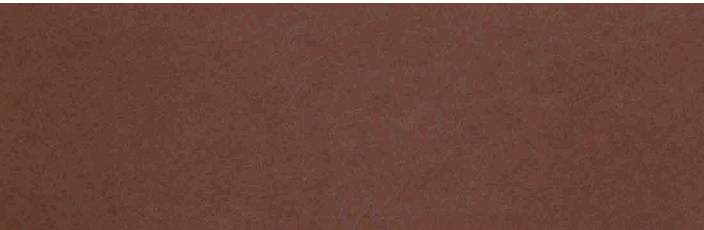
Amber 752



Amber 753



Amber 754



Amber 755



Amber 756



Swisspearl Planea

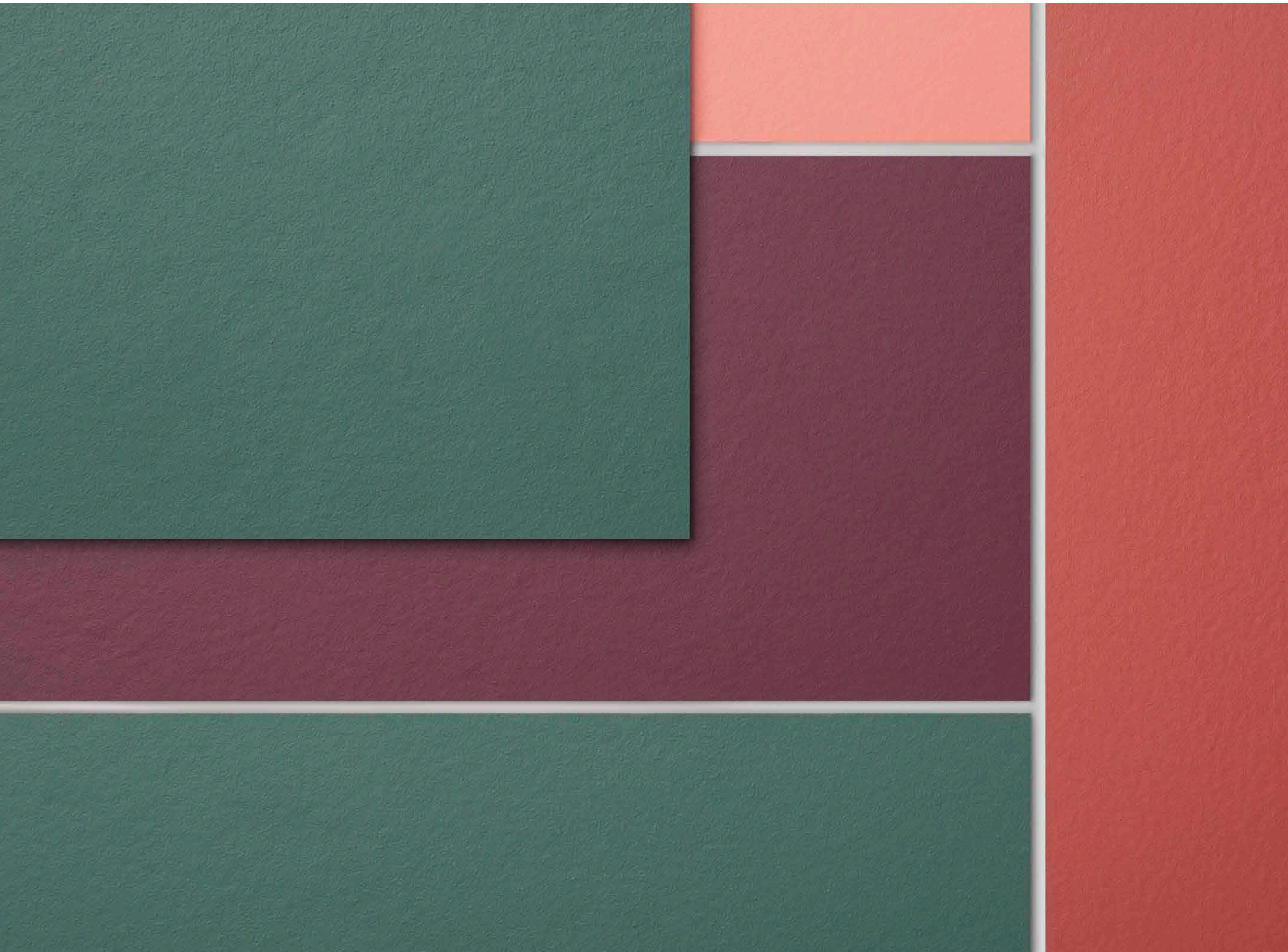
Fresh and colorful creativity

Planea is a grey based fiber cement panel with a opaque coating. The matt and smooth finish emphasizes the clear, bright and bold colors for an overall intense appearance.

In addition, to allow rich colors, the opaque, acrylic surface coating also protects the panels, and thus your building, from extreme weather conditions.

Planea panels enable a color intense, yet a natural, strong and lasting building envelope.

Custom Colors: The Planea panel is perfect for creating your own personal color of choice. (RAL, NCS, Pantone etc). For more information refer to page 50.



Photographer: Meraner & Hauser OHG / SNC, Bozen, Italy.



INFO

Panel

Base panel: Grey based
Top layer: Opaque

Panel size (refer to page 6)

Swisspearl Largo:
Arbitrary panel size up to a maximum size of 3050 x 1250 mm, thickness 8 mm and 12 mm.
Largo panels can also be used for the interior.

Swisspearl Linearis:
4 different panel sizes, thickness 8 mm.

Swisspearl Modula:
2 different panel sizes, thickness 8 mm.

For a detailed summary of the sizing and color options, please refer to our delivery program.

Colors

A wide standard range of 10 colors and additional custom colors.

Installation

The whole range from flat layer to lapped coverings, with face or concealed fastening.

For detailed information refer to our DIM (Design & Installation Manual).

Igloo 932

Seashell 933

Sunrise 831

Sunset 832

Cactus 531

Jungle 532

Coral 331

Dragon 332

Crimson 333

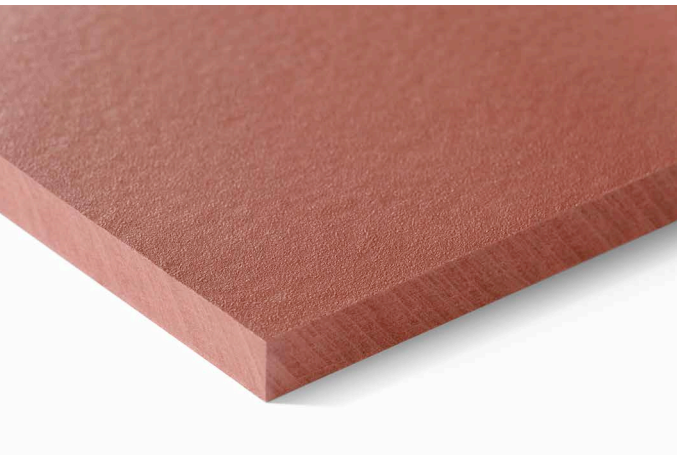
Ruby 334

36 Swisspearl Carat R-Color

Natural look for roof areas

Like Carat, Carat R-Color stands out with its unique, natural look and timeless beauty. The panels are for use in roof areas and have been treated with a special weather-resistant coating. This gives the construction ideal protection against all weather conditions as well as increased UV resistance.

Together with the facade, Carat R-Color creates a unique combination and a distinctive expression



INFO

Panel

Base panel: Integrally colored
Top layer: Opaque

Panel size (refer to page 6)

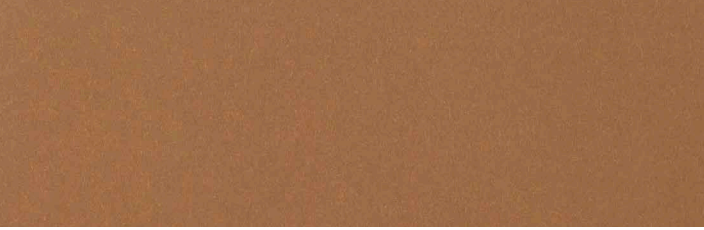
Swisspearl 5th facade:
Arbitrary panel size up to a maximum size of
3050 x 1250 mm, thickness 8 mm.

For a detailed summary of the sizing and color options,
please refer to our delivery program.

Colors

A wide standard range of 10 colors.

Topaz 7070 R



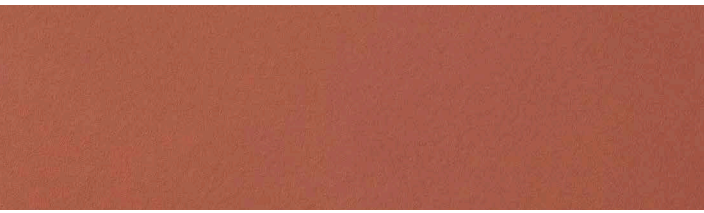
Topaz 7071 R



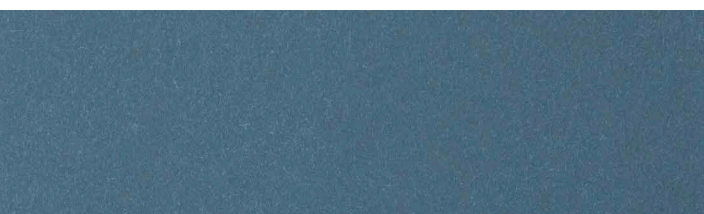
Coral 7031 R



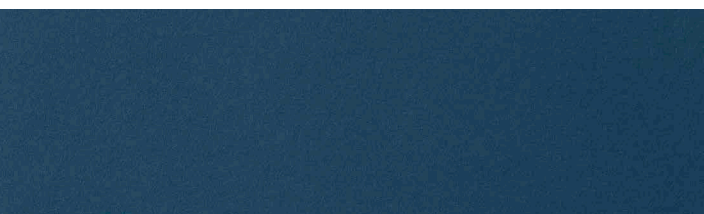
Coral 7032 R



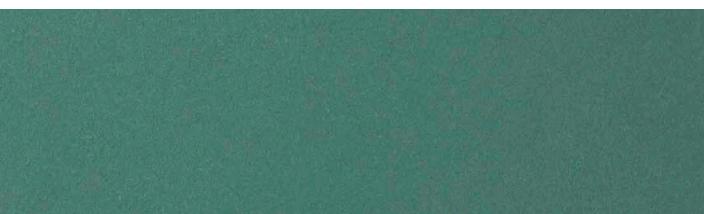
Azurite 7040 R



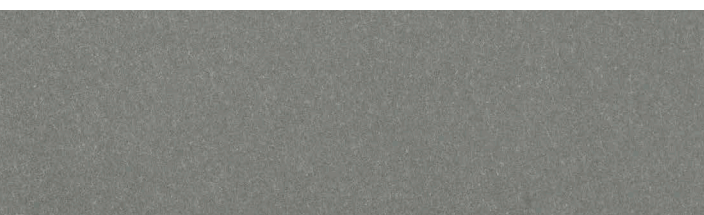
Azurite 7041 R



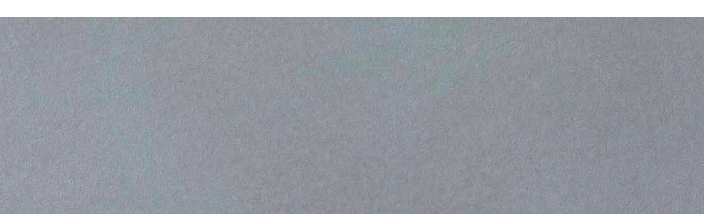
Jade 7050 R



Sapphire 7060 R



Sapphire 7061 R



Black Opal 7020 R



Design possibilities
Made to create

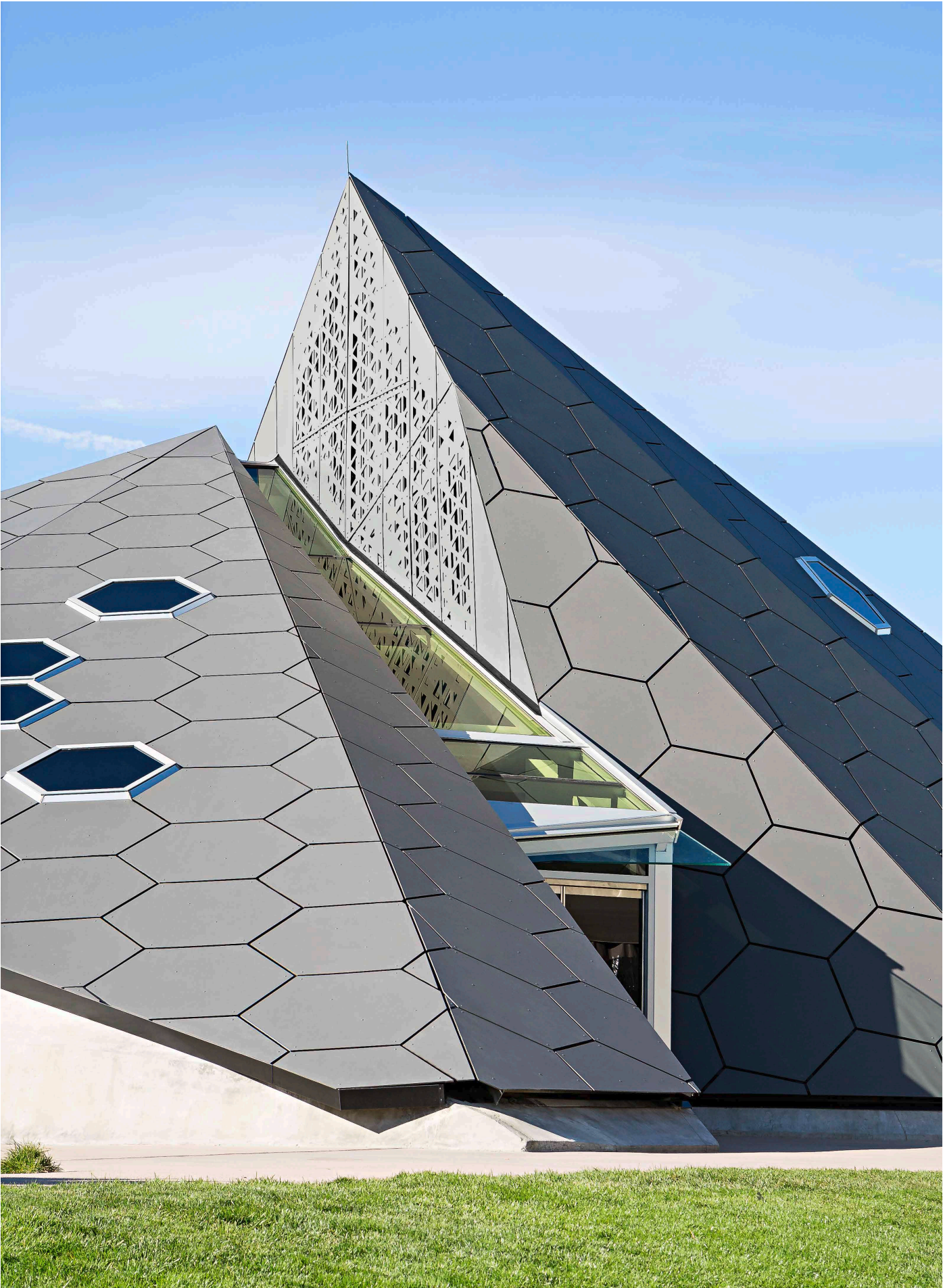
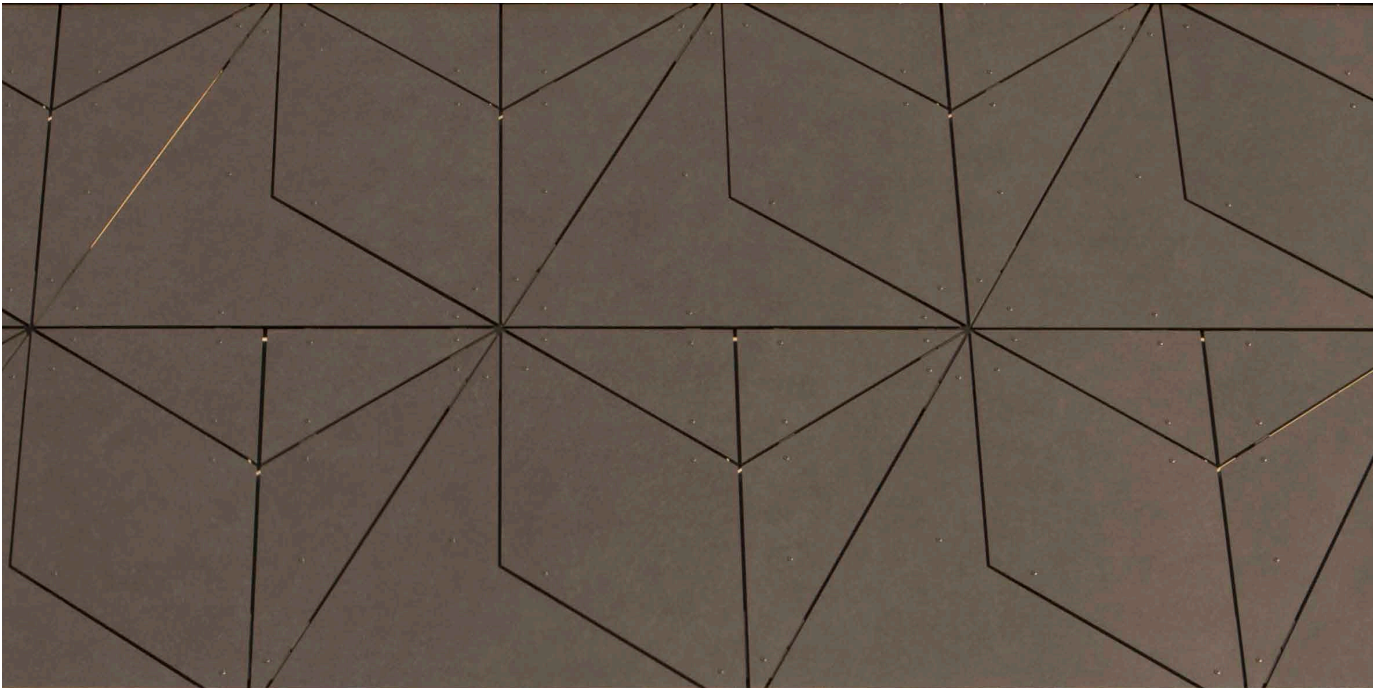


40 Customized panels

Be creative

The design possibilities offered by the wide range of finishes and colors may be complimented with special fabrication or surface treatments. These additional options allow an exclusive, special touch to be given to every high profile building.

The various Swisspearl specialties rest on the integrally colored panel platform. Panels with perforations, engravings or other surface treatments are provided with an outstanding finish. They may be used individually or in combination with other Swisspearl panels in the same shade, different shade or with other materials.

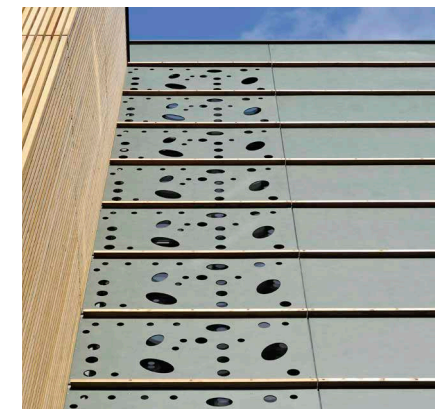
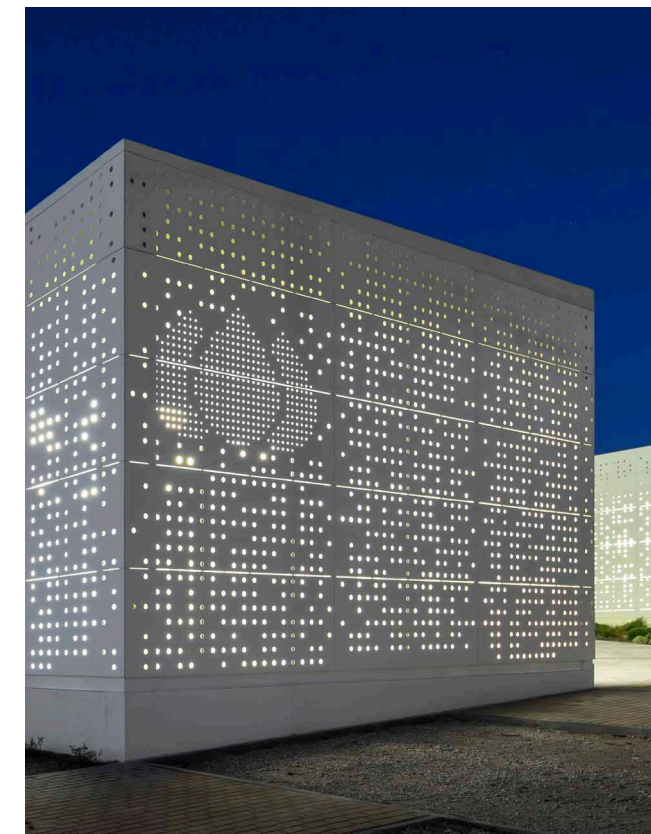


Perforations

Design possibilities with functionality

Holes, slots and other shaped perforations allow the creation of unusual effects. Perforated panels may have a function (sliding shutters, lighting concepts, windscreens, separations, sound absorption, etc.) or be purely decorative. Each perforation project needs to be checked by our technical advisors. As a guideline, the amount of perforations may be up to 18%.

Perforated panels are available in Carat and Reflex, other color lines on request.



Davis-Harrington Welcome Center, Springfield, USA. Architect: Dake Wells Architecture, Springfield, USA. Photographer: Gayle Babcook, Springfield, USA.

Left: Tagus Gas Office building, Cartaxo, Portugal. Architect: Saraiva & Associados, Lisbon, Portugal. Photographer: Fernando Guerra, FG+SG, Lisbon, Portugal.
Right Above: Hotel Balnea, Dolenjske Toplice, Slovenia. Architect: D & K Arhitekti d.o.o., Ljubljana, Slovenia. Photographer: Miran Kambič, Radovljica, Slovenia.
Right Bottom: Bus Station, Velenje, Slovenia. Architect: Gužič Trplan Arhitekti d.o.o., Ljubljana, Slovenia. Photographer: Sandro Lendler, Zagreb, Croatia.

44 Engravings

To impress

Geometric designs, unique custom patterns, company logo etc., the creative possibilities are unlimited. Engravings may be within a panel, change from one panel to the other or run over several panels to create a bigger pattern. The structural feasibility of each intended pattern needs to be checked. As a guideline, the depth of engravings is 1.5 mm (panel 8 mm thickness) or up to 4.0 mm (panel 12 mm thickness).

Engraved panels are available in Carat and Reflex, other color lines on request.



Left: Davis-Harrington Welcome Center, Springfield, USA. Architect: Dake Wells Architecture, Springfield, USA. Photographer: Gayle Babcook, Springfield, USA.
Left Bottom: ITMS Telemedicina do Brasil, Sao Paulo, Brazil. Architect: Mauricio Karam, Sao Paulo, Brazil. Photographer: Mauricio Karam, Sao Paulo, Brazil.
Right: SAP Lobby, Budapest, Hungary. Architect: Vikár és Lukács Építészstúdió Kft., Budapest, Hungary. Photographer: Bujnovszky Tamás, Budapest, Hungary.

ITMS Telemedicina do Brasil, Sao Paulo, Brazil. Architect: Mauricio Karam, Sao Paulo, Brazil. Photographer: Mauricio Karam, Sao Paulo, Brazil.

46 Panels coated on both sides

Twice the look

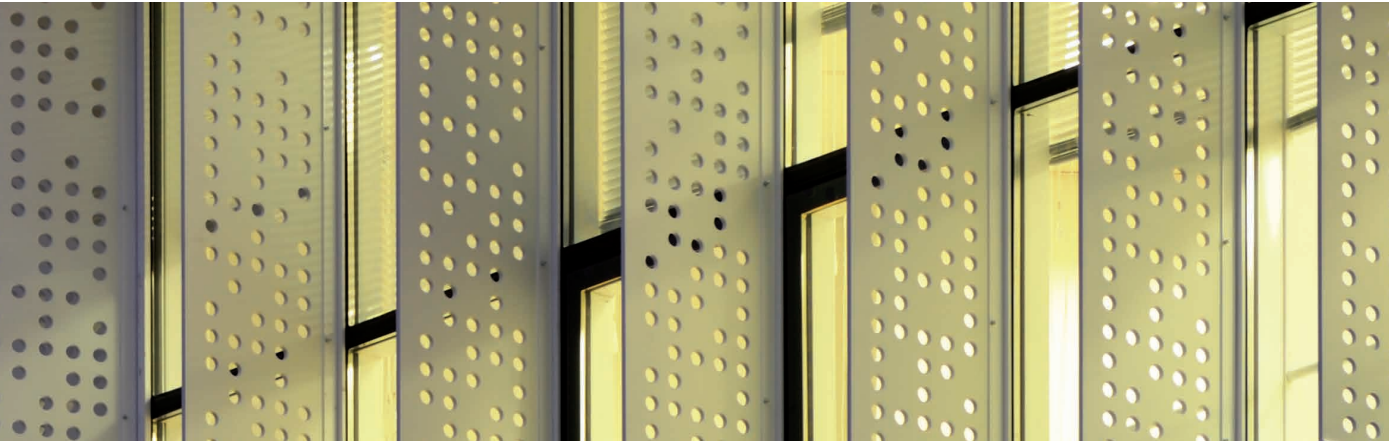
Any panel may be finished on both sides. Typical applications are panels for balconies or balustrades (minimum thickness: 12 mm), partition walls visible on both sides, sliding shutters, etc.



Sun shading elements

Break the light

Customized treatments, such as perforations, are also possible for sun shading elements. With these functional and aesthetic elements, heat buildup in sun exposed rooms can be reduced allowing significant reduction in energy costs for cooling needs.



Customized colors

Create your own color

Do you want to create your own color for the facade, interior or the roof? No problem! Swisspearl has an unmatched competence and knowledge regarding special colors. Thousands of customized colors have been supplied according to architects' specifications.

Customized colors are available for Carat, Nobilis and Planea.



Otago Polytechnic Student Village, Dunedin, New Zealand. Architect: Mason and Wales Architects, Dunedin, New Zealand. Photographer: Matthew Heritage Architectural & Interior Photography, South Yorkshire, New Zealand.



International School, Tianjin, China. Architect: Virtuararch, Shanghai, China. Photographer: Yi Bai Photograph Studio, Tianjin, China.

Ventilated facade system

A highly sustainable solution



52 Appearance of the cladding

Face fastened

Swisspearl facade panels are installed on timber or metal sub frame. The fastening method using face fastened screws or rivets allows an efficient attachment to the supporting structures. In fact, the fastener heads are available in exactly the same shade of colors as the panels, and are hardly visible even a slight distance away as they blend with the overall surface.

For detailed information refer to our DIM (Design & Installation Manual).

Concealed panel attachment methods

The concealed attachment has been designed for applications with the highest aesthetic standards. This high-end method of use brings out the full attractiveness of the surface finish of the Swisspearl panels.

Sigma

Sigma concealed panel attachment is available for 8 and 12 mm panel thickness.

The panels are supplied by the factory or certified fabricator accurately cut to size, including anchoring points to the panel rear face. Aluminum parts are fitted to the panel on site and the panels are hung to the appropriate supports on the sub-framing. The sub-framing is made from either timber battens covered by a layer of EPDM for moisture protection, or by metal, i.e. aluminum or galvanized steel.

Important: Anchoring points for Sigma 8 concealed panel attachment may only be set by Swisspearl directly.

Fischer

It's also possible to fix the concealed facade panels with Fischer FZP II T-PA undercut anchor embedment 5 mm in coordination with a Fischer certified company.

Adhesive

Panels ordered for adhesive application are called ARSB and are available upon request at time of order. Standard Swisspearl panels cannot be used for adhesive application.



54 The rear ventilation system

A highly sustainable solution

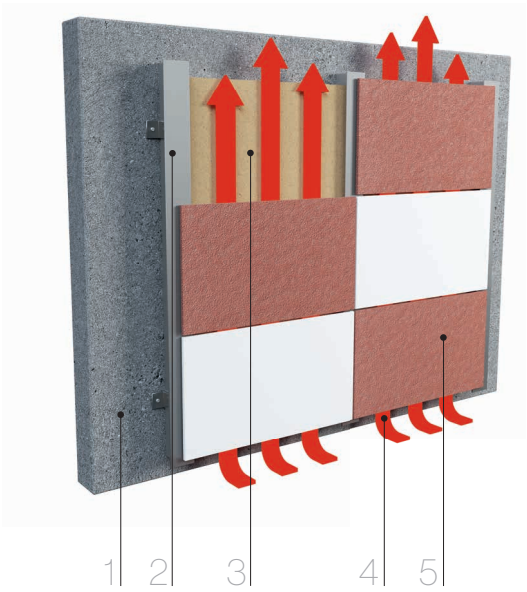
Providing considerable energy savings for any building, the environmentally friendly ventilated facade system and Swisspearl fiber cement panels are not only a good contribution to climate protection, they also offer a great opportunity to enhance the durability, appearance and value of a building.

All Swisspearl panels are specially designed for rainscreen cladding applications with rear ventilation. Combined with each other, they become the most reliable system from the technical construction viewpoint. This cladding system effectively protects the building and its structure from the elements for a long time. Furthermore, it reduces humidity and the air circulation optimizes the efficiency of insulation. Therefore, there will be no problem with mold, fungi, etc. The rot-resistant and non-combustible panels are extremely durable and virtually maintenance free – an attractive solution with many advantages.

Maximum longevity to exterior cladding

The five main components

The typical rainscreen system is based on natural rear ventilation. It is most reliable, sustainable and provides maximum longevity to exterior cladding. Ventilated facade systems consist of five main components:



- 1 Support structure
- 2 Sub frame
- 3 Thermal insulation layer
- 4 Ventilated cavity
- 5 Swisspearl Cladding

1 Support structure	2 Sub frame	3 Thermal insulation layer	4 Ventilated cavity	5 Swisspearl Cladding
The exterior wall of a building is mainly made of concrete, CMU blocks, brick-work, steel or timber frame with studs and planked by gypsum boards.	Swisspearl facade panels are installed on timber or metal supports.	The advantage of an exterior thermal insulation is to keep the entire building structure at a constant temperature and to minimize thermal bridges and thus reduce the loss of energy to a minimum. Economical as well as ecological advantages result.	The main task of the air cavity is the evacuation of moisture and excess heat. Thanks to the pressure difference between bottom and top, the air circulation occurs naturally.	The outer skin of the building envelope has two main functions; to be aesthetically pleasing as well as protecting against influences from climate and environment.

Cost efficiency

Savings up to 30% over typical facade

A Swisspearl facade is a cost-efficient and extremely economical building envelope which retains its value very well; thanks to its excellent characteristics such as easy assembly at all weather conditions, long life, functional reliability and being almost maintenance-free.

Swisspearl ventilated facades have proven in severe climates to be very energy efficient and cost effective over the long term. They also ensure a longer life expectancy for the building structure and the building envelope with low-cost maintenance.



Energy efficiency

Swisspearl facades are ideally suited for energy efficient construction concept. Sophisticated construction with long-lasting weather protection offers distinct, long-lasting energy efficiency.



Durability and maintenance

Rear ventilated claddings are virtually maintenance free. Costs for repainting, recaulking and repairing regularly is therefore eliminated. The longevity of Swisspearl cladding panels makes the economic advantage of the product obvious.



Sustainable and efficient

Outstanding features such as durability, functional reliability, maintenance free upkeep, and simple installation make Swisspearl facades an especially cost-effective, efficient, and high value building envelope starting from day one. The sustainability of Swisspearl products is proven by EPDs (Environmental Product Declarations).

One system

Many advantages

Rear ventilated cladding, often referred to as rainscreen cladding, in combination with the use of a thermal insulation on the outside of the exterior wall, generate numerous advantages as follows:



Long-lasting reliability

Unrivaled everlasting Swisspearl slates offer optimal protection of the facade construction against all manner of weather or outside influences, thus guaranteeing a long-lasting, reliable building envelope for decades.



Flawless

The exterior of every facade is subject to extreme temperature fluctuations. The Swisspearl facade system allows for unhampered dilation of the exterior mounted siding. Therefore, you don't have to worry about extensive repair work to fix cracks in the plaster or flaking due to frost on the exterior.



Fireproof

Swisspearl panels are composed of mineral and thus non combustible according to ASTM E-136. They have outstanding fire protection properties. A feature that offers the necessary safety even for especially compact structures. Fire classification according to NFPA 285 EN 13 501-1 & A2-s1, d0.



Architecturally inspiring

Swisspearl uniquely combines functionality with a strong aesthetic power of expression. Its unique material features, combined with the variety of forms and colors opens up virtually boundless realms of possibility for the design of first-class facades.



Moisture protection

No condensation and mildew on the walls. The back ventilation space allows diffused water vapor inside the building to escape to the outside in a controlled manner.



Ecological from A to Z

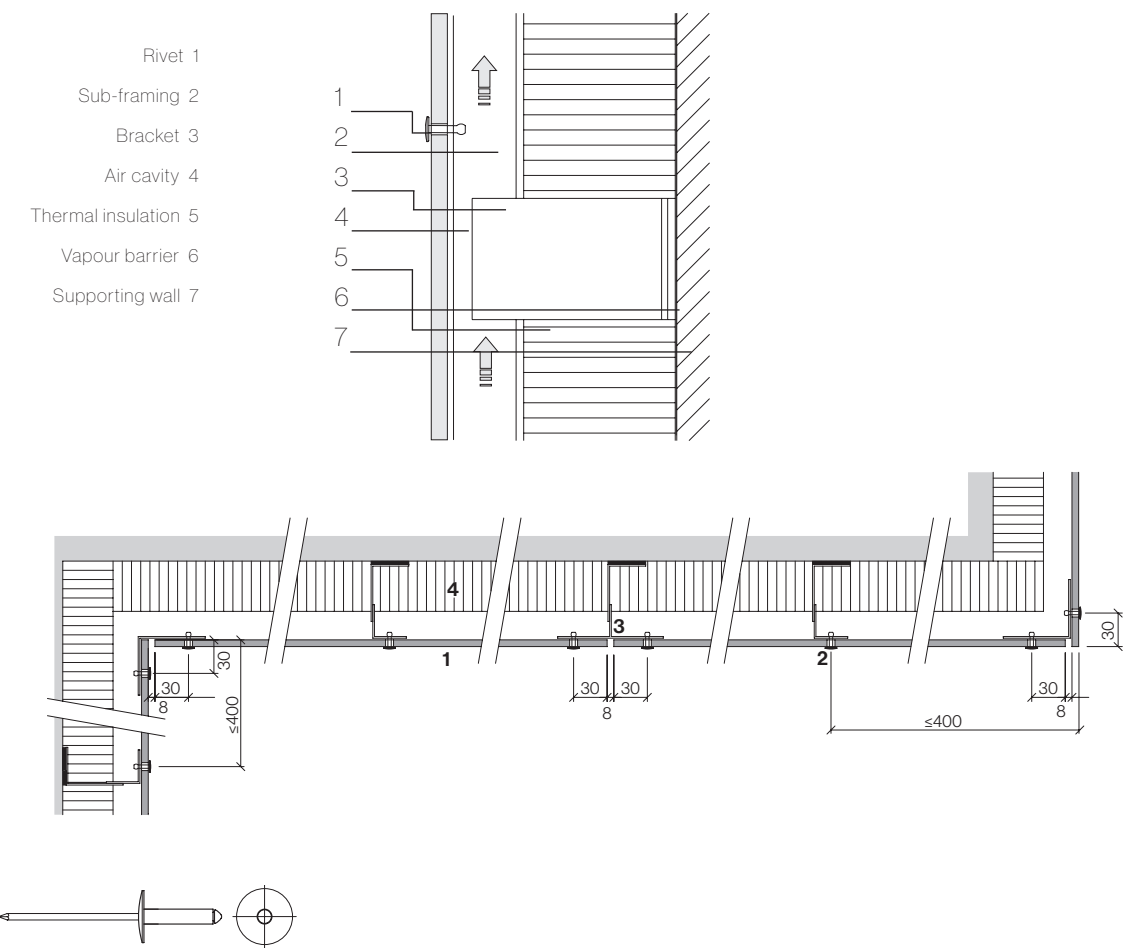
Minimal energy required for production and its long service life make Swisspearl panels the embodiment of sustainability in construction, even in comparison to wood. The layers of the Swisspearl facade system are also separable, making it easy to dismantle.



Optimized comfort

The special structural-physical properties of the Swisspearl facade system maintain an ideal, healthy environment in the building all year round. While the insulation placed throughout keeps the cold out of the living space, natural air circulation in the back ventilation space prevents heat transfer to the interior in the summer and keeps the living space pleasantly cool.

Metal sub frame (aluminium or galvanized steel)



Rivets

Stainless steel or aluminium. Heads powder coated or blank. Standard type 18 mm, longer rivets for lapped cladding panels.

Hole diameters

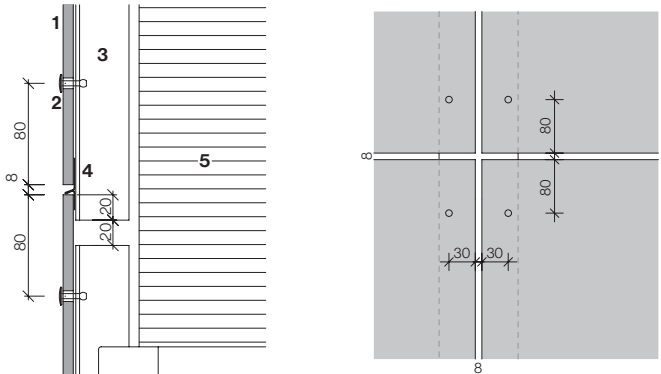
All holes to panels for both fixed and sliding points to be of diameter 9.5 mm. All holes to sub frame for fastening the panels to be of diameter 4.1 mm.

Aluminium profiles

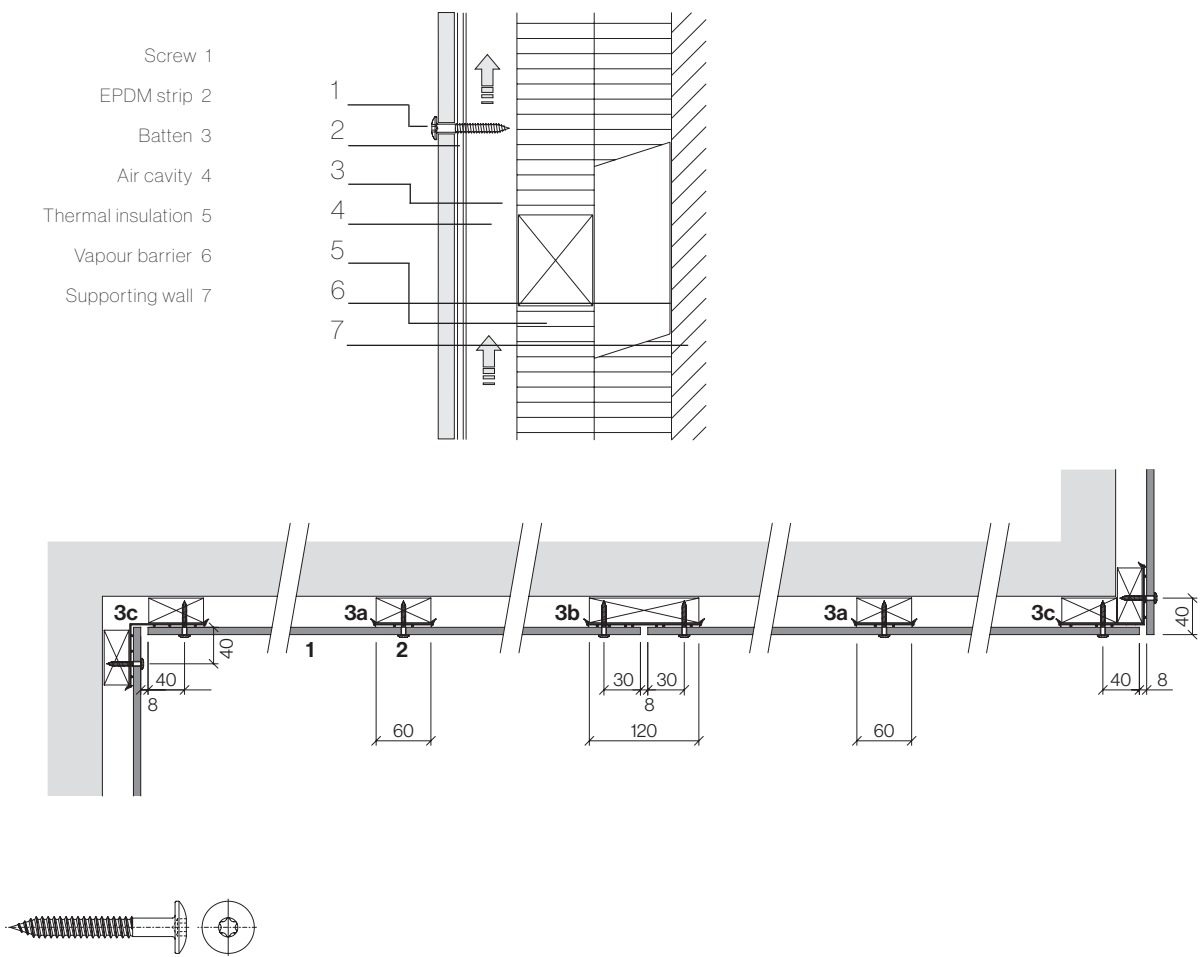
Min. 2 mm thickness aluminum mill or anodized. Profile length about 3 m for installation story high breaks to coincide with horizontal panel joints.

Steel profiles

Steel panel supports to be min. gauge 18 (1.27 mm / 0.05") to obtain nominal pull out value. Profiles should not be longer than 6 m (20').



Timber battens



Screws / bit

Stainless steel screw, with powder coated or blank head. Standard type 4.8x38 mm, head Ø 12 mm, drive T20W.

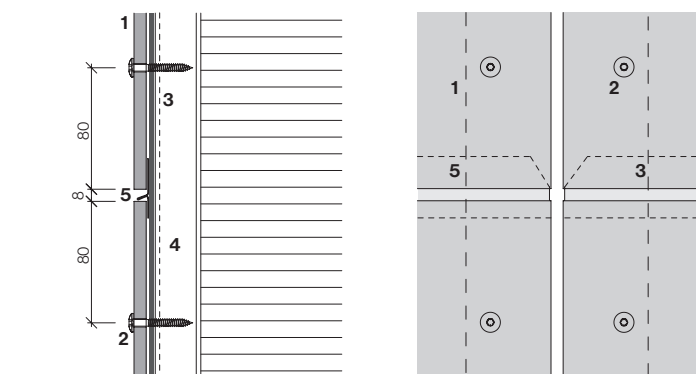
Hole diameters

Holes to panels to be Ø 5.5 mm

Timber quality

Battens must be thickness gauged to 1 face:

- Thickness min. 27 mm (min. 3/4")
- Always use planed surface timber
- Solidity class II (FK II/C24)
- Recommended only using kiln-dried lumber
- Moisture content max. 20-%



60 General information ventilated facade

Facade engineering

Facade engineering is to be carried out by a locally licensed engineer based on the data supplied by Swisspearl (panel and fastening data, wind load tables) and based on the applicable local standards and regulations.

Sub frame/panel support

The panels are supplied including the fasteners but without the support profiles. This leaves the great advantage of flexibility for the project. For example:

- Verticals in metal or timber attached to horizontal Z
- Double threaded spacer screws for timber battens, adjustable in/out
- Aluminum bracket (fixed/sliding)
- Aluminum verticals adjustable in/out
- Timber sub frame made of horizontal and vertical layer
- Verticals in metal or timber to horizontal angle adjustable in/out



General information

Product warranty

The products are manufactured to highest standards and under permanent quality control programs by third party testing facilities as well as by the factory's own laboratories.

In the case that any delivered product should not reach its specified performance, there will be a 20 year warranty covering the functional quality of panels and accessories. The warranty is granted on condition that the latest Design and Installation Manual has been fully complied with.

Properties of the material

The printed colors may differ from the original shade of the color. To see the exact color, and when matching up colors on adjacent parts of a building, one must use the original panel samples.

The natural ingredients used in the fiber cement panels will to some extent determine the unique character of the material. The intensity and color tone may vary slightly depending on the production batch. Differences in texture and color tone between the individual panels are a natural part of the Vintago, Incora and Avera production characteristics and also underline the liveliness of the material expression in the facade. Such differences in color are not covered by the warranty.



There for you

Contact us

Swisspearl's comprehensive offering of services and advice allows to respond to the different needs of builders, facade builders, roofers, architects and planners in order to jointly develop informed solutions. Sharing knowledge plays a key role here. That is also why we have partnered up with exclusive Distributors to serve the market better.

Furthermore, Swisspearl supports its customers with comprehensive specialist advice, detailed documentation, technical manuals and its customer magazine, which has become a renowned publication for planners and architects.

Please do not hesitate to contact us. One of our dedicated and knowledgeable staff will be happy to provide you with help and advice.



The internationally distributed magazine Swisspearl Architecture sets Swisspearl fiber cement products within a contemporary architectural context.



Subscribe to our **Swisspearl Architecture** magazine.



Swisspearl
CH-8867 Niederurnen
T: +41 55 617 11 60
info@swisspearl.com

www.swisspearl.com

Member of the
Swisspearl Group

